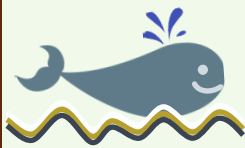




# Discovery Card!

English

Can you find these special places in the garden?



## Grey Whale Garden

Pretend you're a salmon out in the deep ocean. Take a swim around the Grey Whale to find all its body. What kind of plant is that at its head? What kind of plant is that at its dorsil fin?



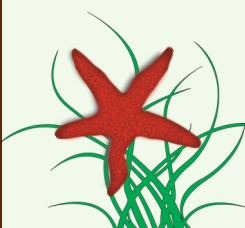
## Bog Gardens

Take a rest next to these plants that thrive in soggy soil. Can you find the "blue clue"?



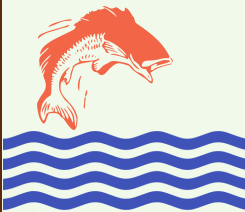
## Tide Pool Garden

Now you're swimming near a rocky beach, with plants that look like creatures you might see at low tide. Which plants look like Sea Anemones? Can you find two more tide pools?



## Starfish Garden

Take a swim into each of the starfish arms and look at the plants. How are their leaves and flowers different from each other, or the same?



## Salmon Journey

Swim upstream and rest in the pools with plants and animals all around. Watch out for the bear's paw and other predators.



## The Lookout

Good for you- you have reached the spawning grounds! Change yourself back to you again. Search for all the places you swam. How far can you see?



Magnuson  
Children's  
Garden

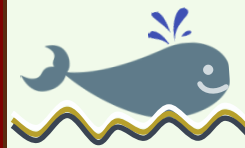
-growing a love of nature and gardening



# səs'aytx'əx' pipa!

Southern Lutshootseed

g'ə'aydx' čəx' ?u tiit' ləli'ali dx'ʔal tə spədalik'.



## q'ədis spədalik'

?ayit' čəx' ?əs'istə' ?ə tə sčədadx' ?al tə sšəp' ?ə tə hik' x'wəłč. fičibəx' čit' ?ə tə q'ədis g'wələ labədəx' tiit' stačig'wəds. stabac tiit' sšax'w'dup ?al tə sšayus. stabac tiit' sšax'w'dup ?al tə sk'wubičs.



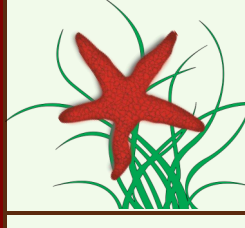
## q'wəłult

qag'əx' ?a tiit' čit' sšax'w'dup tiit' həli' ?al tə stək'w' pəd. g'wə'aydx' čəx' ?u ?ə tə q'ix'w' dx'w'yəčbid.



## cuwadəč spədalik'

?utičibəx' čəx' čit' ?ə tə čəłčəłə' swadəč, dx'ʔal sšax'w'dup tiit' ?əs'istə' k'wəłq' g'wələlabəd' čəd ?al tə šuł. stabac tiit' sšax'w'dup ?al tə x'wəłč' ?ənəmənis. g'wə'aydx' čəx' ?u salit' cuwadəč.



## q'wəłaci' spədalik'

fičibəx' čəx' dx'ʔal tə q'wəłaci' čaləš' g'wələ labədəx' ?al ti sšax'w'dup. ?əsšid' k'wi sləli' ?ə ti čułta' g'wələ čəqay'səb. ?əsšid' k'wi ?əs'istə's.



## sčədadx' slətayil

fičibəx' čəx' lətayil g'wələ qa'k'w' ?al tə q'u' dx'ʔal sšax'w'dup g'wələ tičulalps' bək'w' dx'čad. labčəbut dx'ʔal tə sčətx'wəd' jəšəd' g'wələ dx'w'sx'wi'x'wi'?



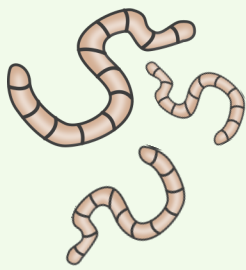
## səs'wač sk'wak'w'tač

ha'ʔ dx'ʔal dəg'wi -?a čəx'w' ti x'alag'wildup. hə'ayg'w'ascutəx'w' čəx'w' dx'ʔal dəg'wi. g'wəčədəx'w' dx'ʔal bək'w' tučib' čəx'w'. ?əsšid' dx'w'lił' ?ə k'(i) adslab.



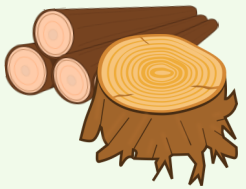
Magnuson  
Children's  
Garden

-growing a love of nature and gardening



### Worm Bin

All soil creatures decompose dead leaves and plants into good compost. The ones living in this bin make their compost from our leftover fruit and vegetable scraps! How many of these creatures have you seen before?



### Log Pile

These logs are being decomposed too! Can you count their tree rings and find the knotholes? What things do you see that were made from trees?



### Pollinator Garden

All these flowers provide nectar and pollen for bees, butterflies, hummingbirds, and other beneficial insects! How many pollinators can you see here now?



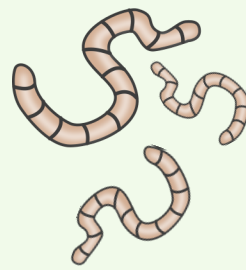
### Willow House

Willow branches have a special ability to sprout roots. They soon became tree trunks with their own branches! How many branches can you count?



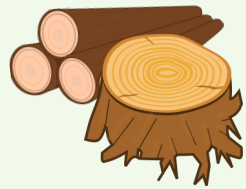
### Rolling Lawn

This is a fun place for everyone to roll downhill. Pretend you are a raindrop, a rock, or a log while you are rolling. How does it feel?



### d'Zid'Zg'w'ali

bək'w spəd d'Zid'Zg'w'ali  
dx'w'čiq'wəb 'əs'atəbəd ču'ta' g'w'al  
s'xax'w'dup dx'w'al ha'ʔ sbəpədəb.  
'əs'ta'til ti d'Zid'Zg'w'ali 'al tə wəqəb  
ʔuhuyud sbəpədəbs dx'w'al  
təg'w'tətəd s'q'w'alətədčət g'w'al  
sd'əbidčət. k'wid k'wi  
d'Zid'Zg'w'ali 'ə k'w(i) adtaslab.



### spuk'wubəd

ʔal' 'əs'pəqəd ti stək'wəb 'ə tə  
dx'w'čiq'wəb. g'w'ək'wəsəd čəx'w 'u  
sqal'qalək'ws čəbidac g'w'al  
g'w'ə'aydx'w ti təbəd 'əslu'. stab  
k'w(i) adslabdx'w tiit' tuhuydx'w  
tu'ʔal čəbčəbidac.



### səbəd'idup

'əbšid tə bək'w čəqay'səb 'ə  
šuk'w'alq'w'u' g'w'al pələn dx'w'al  
səbəd, yu'ʔyubuəč, tiid g'w'al  
d'Zid'Zg'w'ali. k'wid k'wi  
dx'w'spalənitas g'w'əslab čəx'w 'al  
tə dišə'.



### sčapacaltx'w

sčapac sčast huyil q'wəbəlax'w.  
huyil həlg'w'ə' sčapac dx'w'al  
bəsčast. k'wid k'wi sčast k'w(i)  
adsk'wəsəd.



### tə'jag'w'ilidup

'a ti sča'ʔa'ali dx'w'al  
bək'wak'w'bi'x'w dx'w'al tətčətč. 'ayit'  
čəx'w sqəlb g'w'al ti čə'xə' g'w'al ti  
stək'wəb pədtab 'utə'jiləx'w'čəx'w.  
'əs'xid k'w(i) adsxəč

Translations provided by: *q'w'atələmmu* ~ Nancy Jo Bob

*qwatulumo@gmail.com*

*Southern Lushootseed*

*Research & Revitalization*

*Duwamish/Lummi*



**Please Return Me to the Kiosk!**

Check out our website for more fun activities that you can do at home:

[www.magnusonchildrensgarden.org](http://www.magnusonchildrensgarden.org)



**Please Return Me to the Kiosk!**

[www.magnusonchildrensgarden.org](http://www.magnusonchildrensgarden.org)